

Pedagogically sustained Adaptive LEarning
Through the exploitation of
Tacit and Explicit knowledge



The ePrep CoP

Birth and development of a CoP inspired and supported by PALETTE

Nathalie Van de Wiele - Director and founder of ePrep

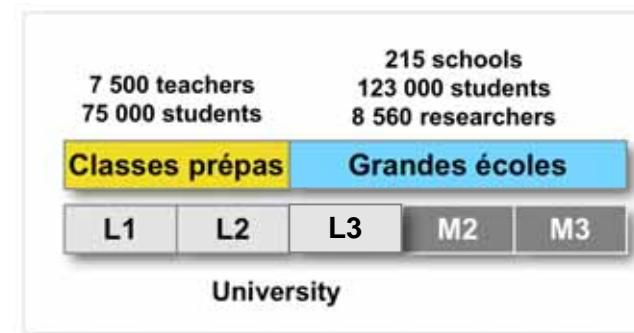


Review Meeting, Luxembourg, 4 -5 April 2007

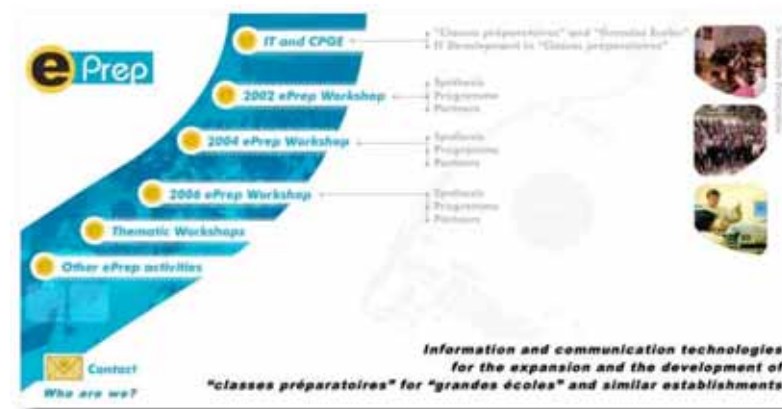


ePrep in a few words

- Mission
 - A non-profit association founded in 2001 to contribute to the development of « Classes préparatoires aux grandes écoles » through Technology Enhanced Learning
- Activities
 - ePrep.org bilingual Website
 - ePrep International Workshops
 - Watch activities (ePrep Newsletter)
 - Studies and researches
- Partners
 - Conférence des grandes écoles
 - Teachers' Unions
 - CNED, CDC, etc.



Universities and “grandes écoles” in the French educational system

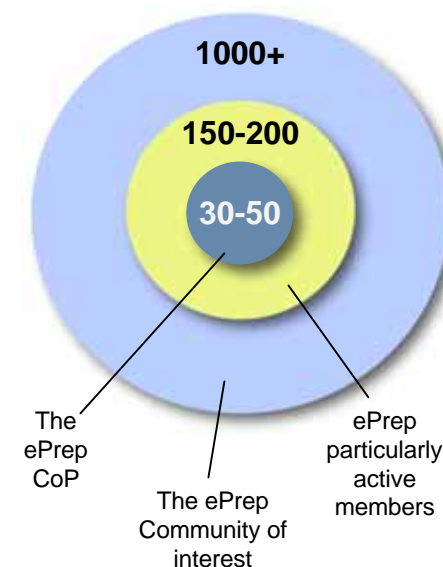


The www.ePrep.org home page



History and emergence of the ePrep CoP

- **A community of interest** since the 2002 ePrep Workshop
 - 1000+ members to date
- **An evolution towards a CoP** envisioned in May 2006
 - conclusions of the 2006 ePrep Workshop (Paris)
- An **official launch** in October 2006
 - on the occasion of the 1st ePrep thematic Workshop (Sousse)



1st ePrep international Workshop (May 2002, Sophia Antipolis)
Birth of the ePrep Community of interest

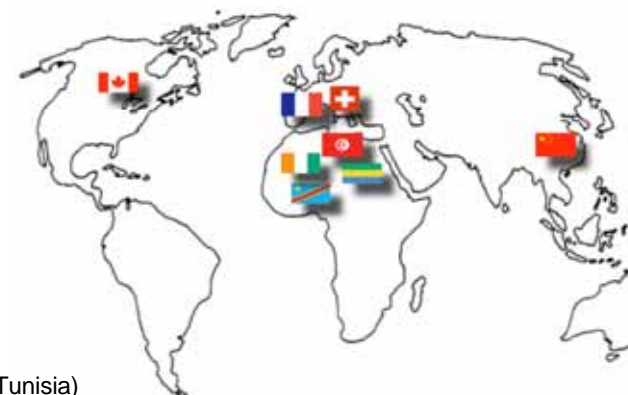


The ePrep CoP today

- A “high level” group of 30+ members
 - teachers (all fields), researchers, reps from institutions
 - from 8 (French speaking) countries
 - new members accepted on the basis of their potential contribution to the CoP collaborative work
- Driving the development of key projects
 - under the guidance of the ePrep steering committee chaired by the President of the Conférence des Grandes écoles



ePrep 2006 Thematic Workshop (Sousse, Tunisia)
Birth of the ePrep CoP





PALETTE & the ePrep CoP: a mutual interest

- The ePrep CoP offers to the PALETTE project
 - the “**ideal case**” of an emerging CoP
 - an important **visibility** in a renowned European higher education cycle
 - a potential **impact** beyond Europe
 - French speaking countries, particularly Africa
- PALETTE offers to the ePrep CoP
 - **guidance**: the CoP really emerged thanks to the guidance of the PALETTE scientific coordinator and to the involvement of PALETTE researchers in the blog dedicated to the CoP (<http://palette.ercim.org/forum/>)
 - **tools**: the possibility to access advanced tools
 - **motivation**: most CoP members are discovering the world of European R&D



The PALETTE blog dedicated to the ePrep CoP



Dr Christine Vanoirbeek during the opening session of the ePrep thematic workshop in Sousse



The ePrep CoP: which tools for which needs?

CoP Needs

- a central tool
 - a collaborative work environment with awareness functionalities ✓ **eLogBook**
- project specific tools
 - a semantic Wiki for the Wikiprepas project ✓ **SweetWiki**
 - a Web editor-browser for the new ePrep francophone platform ✓ **Amaya**
 - a multimedia editor suited to the development of International cooperation between schools ✓ **LimSee3**

PALETTE tools
(ideally suited!)



The Wikiprepas Web site hosted by INRIA:
<http://argentera.inria.fr:8080/wikiprepas/>



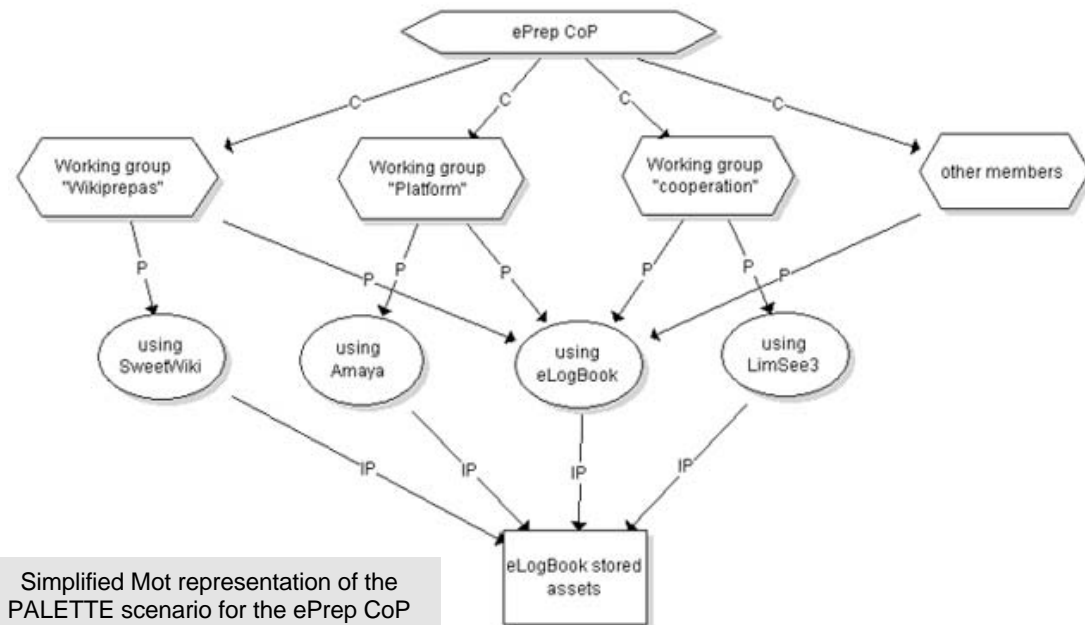
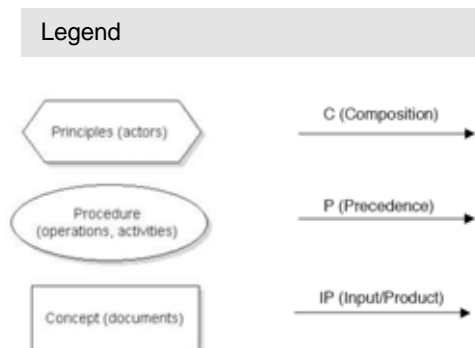
The ePrep eLearning platform to be hosted by ParisTech
<http://62.212.103.221/eprep/>





PALETTE scenario for the ePrep CoP

- It involves the whole ePrep CoP and is based on a real situation
 - preparation of the 2nd ePrep thematic workshop (Lyon, Nov. 5-6, 2007) on the theme “The ePrep CoP: which tools for which needs?”
- A first version of the scenario is available and already trialled by CoP members
 - the final version, fully validated by CoP members and PALETTE researchers, will be delivered end of July





Thank you for your attention

nathalie.vandewiele@eprep.org
www.eprep.org

